



NORTH LITTLE ROCK WASTE WATER UTILITY

January 28, 2013

RECEIVED

JAN 28 2013

Kn 4:00

Mr. Allen Anderson, Enforcement Analyst
Water Enforcement Division
Arkansas Natural Resources Commission
101 E. Capitol, Suite 350
Little Rock, AR 72201

RE: North Little Rock Waste Water Utility; Consent Administrative Order LIS 10-218

Dear Mr. Anderson:

Attached, please find a copy of the 2013 Annual Report for Consent Administrative Order LIS 10-218.

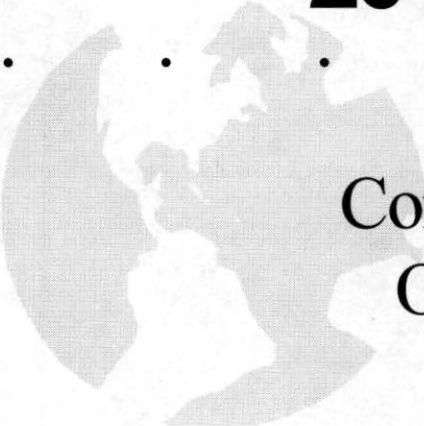
Sincerely,

Marc Wilkins, PE
Director

P.O. Box 17898
North Little Rock, AR
72117-0898

North Little Rock
Waste Water Utility

2013 Annual Report



Consent Administrative
Order LIS 10-218

North Little Rock Waste Water Utility 2013 Annual Report

Consent Administrative Order LIS 10-218

Table of Contents

1. Wastewater Master Plan

A. Milestone Schedule

B. Capital Improvements Plan (CIP)

- i. Faulkner Lake Phase III STP Modifications
- ii. Miscellaneous Cured-In-Place Pipe (CIPP) Liner Project
- iii. Shillcutt Pump Station Modifications
- iv. Five Mile Creek Bar Screen and Conveyor Modifications
- v. Five Mile Creek Influent Pump Station Modifications
- vi. Auxiliary Generators for the Shillcutt, Wilcox and White Oak Pump Stations, and for the White Oak STP
- vii. Oakbrook Pump Station Upgrade
- viii. Miscellaneous Gravity Collection Improvements

C. Sewer System Evaluation Survey (SSES)

D. SSES, Pumping Station, Capacity Assessment, and Hydraulic Model Evaluation Report

E. Collection System and Wastewater Treatment Plant Remedial Measures Plan

- i. Increase production with existing crews
- ii. Increase production by adding additional crews or personnel
- iii. Provide emergency pumping connections at pump stations.
- iv. Provide emergency generator connection and transfer switches at pump stations.
- v. Identify areas subject to building/private property backups.
- vi. Public education
- vii. Treatment plant stormwater runoff protection
- viii. Annual CIPP Maintenance Contract
- ix. Secure Funding for Deficiencies

2. Civil Penalty Payment Summary

3. Notifications of Deficiencies

4. Compliance Delays

5. Certification

6. Appendix

North Little Rock Waste Water Utility

2013 Annual Report

Consent Administrative Order LIS 10-218

Attn: Allen Anderson, Enforcement Analyst
Water Enforcement Division
Arkansas Department of Environmental Quality

In accordance with the requirements of Consent Administrative Order LIS 10-218 (CAO), Order and Agreement, Paragraph 3, Reporting, the third Annual Report is due February 1, 2013.

1. Wastewater Master Plan

A. Milestone Schedule

<u>Date</u>	<u>Milestone</u>
• Feb. 1, 2011	First Annual Report due
• Feb. 10, 2011	Effective date of Order
• Mar 10, 2011	Cross Connection Certification due
• Mar. 10, 2011	First Penalty Payment due (\$4,375.00)
• Apr. 25, 2011 – Feb. 25, 2013	Monthly Penalty Payment due (\$4,375.00/Mo.)
• Feb. 1, 2012 – Feb. 1, 2021 Or until closure of this CAO	Annual Report due

B. Capital Improvements Plan (CIP)

The following is a description of progress made on CIP projects during the past year and listing of projects scheduled to be started in 2012.

i. Faulkner Lake Phase III STP Modifications

This project consists of modifications to the influent pump station, addition of a primary clarifier, addition of a gravity thickener, addition of a parshall flume, removal of the existing grit chamber, and miscellaneous piping, structural, and hydraulic modifications.

This project is currently in design and is funded by RLF No. 00594-CWRLF-L. Crist Engineers, Inc. is the design engineer.

In an effort to expedite the completion of modifications to the influent pump station, the pump station was separated from the larger project.

The two projects are:

a. Modifications to the Influent Pump Station

Bids were opened on October 18, 2012. An agreement has been executed with J. S. Haren Company of Athens, TN in the amount of \$2,092,000. A Notice to Proceed was issued January 24, 2013, and the projected date for completion is November 15, 2013.

b. Faulkner Lake Phase III STP Modifications

Plans have been submitted to ANRC and ADH. Advertisement for bids and bid opening are planned during the first quarter of 2013 with the Notice to Proceed and start of construction in the second quarter of 2013.

ii. Miscellaneous Cured-In-Place Pipe (CIPP) Liner Project

a. CIPP Project 2012

This project consists of CIPP rehabilitation of existing pipelines identified from staff investigations in the Lakewood Lake No. 2 basin, Roseclair Drive, Rhodes Street, and part of the Rose City Interceptor.

Insituform Technologies was awarded the contract in the amount of \$393,900. Quantities of CIPP installed were:

<u>Quantity (LF)</u>	<u>Size</u>	<u>% Complete</u>
2773	6"	100
4675	8"	100
582	10"	100
<u>2180</u>	24"	100
10,210 Total		

Design, bidding and construction observation services were provided using in-house resources.

b. CIPP Project 2013

This project will consist of preparation of contract documents for cured-in-place pipe (CIPP) rehabilitation of existing pipelines to be identified from staff investigations and from the SSES field tests conducted during the previous year.

Design, bidding, and construction observation will be provided using in-house resources.

iii. Shillcutt Pump Station Modifications

Modifications to the Shillcutt P.S will include: installation of a new wetwell; new pumps with variable frequency drives; modifications to the existing bar screens; auxiliary power supply; modifications to the discharge piping and valves; and miscellaneous structural, piping, electrical, and site work items.

Topographic site survey has been completed by in-house resources.

Drawings and specifications have been submitted to ANRC and ADH. Crist Engineers, Inc. is the design engineer. It is projected that construction will begin in the second quarter of 2013.

In-house resources will conduct periodic inspections during construction in addition to engineering services by Crist Engineers, Inc.

Projected cost of construction is \$4,526,000.

iv. Five Mile Creek Bar Screen and Conveyor Modifications

This project will consist of replacement of the bar screen rake mechanism and replacement of the existing belt conveyor with an auger type conveyor.

The bid opening date is scheduled for February 5, 2013, at 10:30 AM, with the Notice to Proceed and start of construction in the second quarter of 2013.

Marlar Engineering Co., Inc. is the design engineer.

v. Five Mile Creek Influent Pump Station Modifications

This project will consist of modifications to the influent pump station for future hydraulic expansion to include provisions for future flow equalization and the possible addition of flow from the Sherwood South WWTP. The project will also include the addition of auxiliary power generation for influent and effluent pumping during power failures.

The bid opening date is scheduled for February 5, 2013, at 10:30 AM, with the Notice to Proceed and start of construction in the second quarter of 2013.

Marlar Engineering Co., Inc. is the design engineer.

In-house engineering staff will conduct periodic inspections during construction, in addition to engineering services by Marlar Engineering Co., Inc.

vi. Auxiliary Generators for Pump Stations and Treatment Plants

a. Proposed 2013 Auxiliary Power Supply Program

Five Mile Creek Wastewater Treatment Plant
White Oak Bayou Wastewater Treatment Plant
Wilcox Pump Station
Shillcutt Pump Station
Marche Pump Station
Frontier Road Pump Station
Hwy. 365 Pump Station
Hill Lake Pump Station
Maybelline Pump Station
Stone Links (Quapaw) Pump Station

b. Proposed 2014 Auxiliary Power Supply Program

Hwy. 107 Pump Station
Manor Drive Pump Station
Counts Massie Pump Station
Rixie-Trammel Road Pump Station

vii. Oakbrook Pump Station Upgrade

This project will consist of a new submersible-type pump station with auxiliary power supply to replace the existing suction-lift type station.

Design has been delayed due to difficulties in acquiring property, access easements and temporary construction easements.

Construction is projected to begin in the first quarter of 2014.

In-house staff will conduct the topographic survey and preparation of easement surveys.

Design, bidding and construction observation will be provided using outside services contracts.

In-house staff will conduct periodic inspections during construction.

viii. Miscellaneous Gravity Collection Improvements

The Capital Improvements Plan included a line item for miscellaneous gravity system improvements. These are projects identified during the flow monitoring and hydraulic modeling phases of the Masterplan. Staff identified the projects with the highest priority as follows:

a. Sediment Removal (FL-P1-SR)

Projected cost of construction is \$290,000 and the projected cost of professional services is \$43,500.

b. Cedar Street Sewer Improvements

Design and timing for this project is dependent on final stabilization of the landslide.

Projected cost of construction is \$220,000 and the projected cost of professional services is \$33,000.

c. Gravity Pipe Replacement (FL-GSO2)

This project is the downstream extension of the Lakewood Lake No. 2 project.

Projected cost of construction is \$1,300,000, and the projected cost of professional services is \$195,000.

d. Gravity Pipe Replacement (FL-GSO3)

This project consists of gravity collection improvements along the south side of Lakewood Lake No. 1.

Projected cost of construction is \$1,100,000, and the projected cost of professional services is \$165,000.

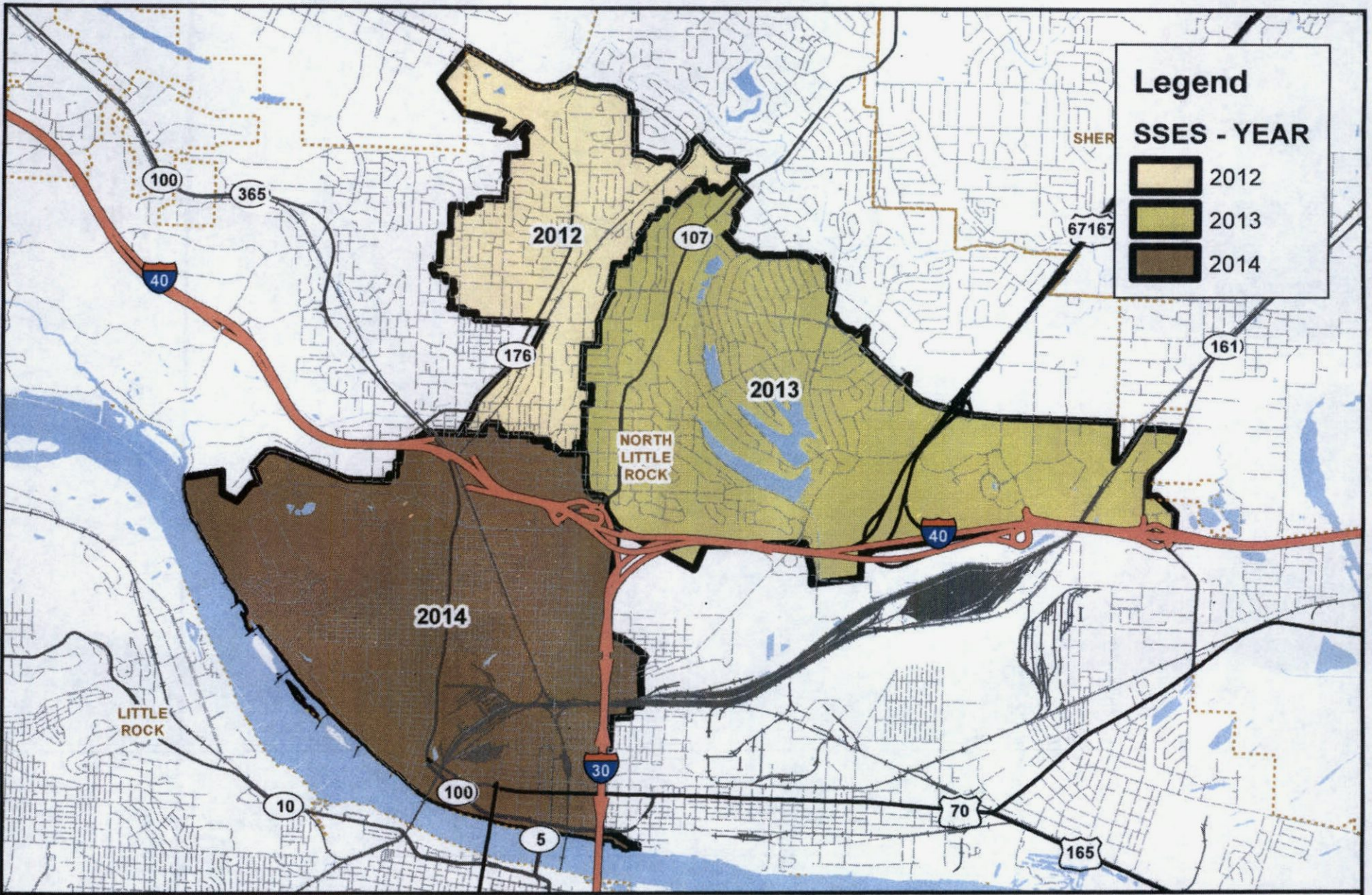
C. Sewer System Evaluation Survey (SSES)

The following is an update on SSESs completed and/or in progress during the past year, and scheduled for the upcoming year:

Based on recommendations in the 2011 Master plan, priorities for SSES fieldwork for the three (3) year period 2012-2014 are: Levy (2012), Lakewood (2013), and Baring Cross (2014). In 2012, the Utility contracted with rjngroup, inc. to conduct SSES fieldwork. The contract is for one (1) year with options to renew on an annual basis for two (2) additional years. Following is a summary of SSES fieldwork conducted in the Levy area during the calendar year 2012.

<u>Activity</u>	<u>Quantity</u>	<u>Results</u>	<u>Quantity I/I (mgd)</u>
Smoke Testing	205,569 LF	256	0.539
Manhole Inspections	571 EA	633	0.354
Dye Testing	50 EA	42	1.567
TV Investigations	276,870 LF*		not quantified

*System wide



North Little Rock Waste Water Utility

The data contained herein was compiled from various sources for the sole use and benefit of the North Little Rock Waste Water Utility. Any use of the data by anyone other than the North Little Rock Waste Water Utility is at the sole risk of the user; and by acceptance of this data, the user does hereby hold the North Little Rock Waste Water Utility and the City of North Little Rock harmless and without liability from any claims, costs, or damages of any nature against the North Little Rock Waste Water Utility and the City of North Little Rock, including cost of defense arising from improper use of the data or use by another party. Acceptance or use of this data is done without any expressed or implied warranties.

D. SSES, Pumping Station, Capacity Assessment, and Hydraulic Model Evaluation Report

The Master plan 2011 included a “Capacity, Management, Operations, and Maintenance Self-Assessment Report”, “Flow Monitoring “, and “Hydraulic Model” of the North Little Rock Waste Water Utility’s facilities. This information, along with staff input, was used to develop the capital improvements plan.

The Utility’s geographical information system has been utilized to subdivide the collection system into sub-basins or “sewersheds” of manageable size. SSO data for non-capacity related overflows is being used to focus the Utility’s cleaning efforts to the sewersheds with the highest number of non-capacity related overflows.

The following map (Flow Meter Locations) documents the efforts to collect flow data prior to and after completion of rehabilitation projects.

Legend

FLOW METER LOCATIONS

- ⊗ PRE CIPP MONITORING 12/2/11 THRU 4/3/12
- ⊗ POST SHILLCUTT PHASE IV CONSTRUCTION 12/27/11 THRU 3/20/11



North Little Rock Waste Water Utility

The data contained herein was compiled from various sources for the sole use and benefit of the North Little Rock Waste Water Utility. Any use of the data by anyone other than the North Little Rock Waste Water Utility is at the sole risk of the user, and by acceptance of this data, the user does hereby hold the North Little Rock Waste Water Utility and the City of North Little Rock harmless and without liability from any claims, costs, or damages of any nature against the North Little Rock Waste Water Utility and the City of North Little Rock, including cost of defense arising from improper use of the data or use by another party. Acceptance or use of this data is done without any expressed or implied warranties.

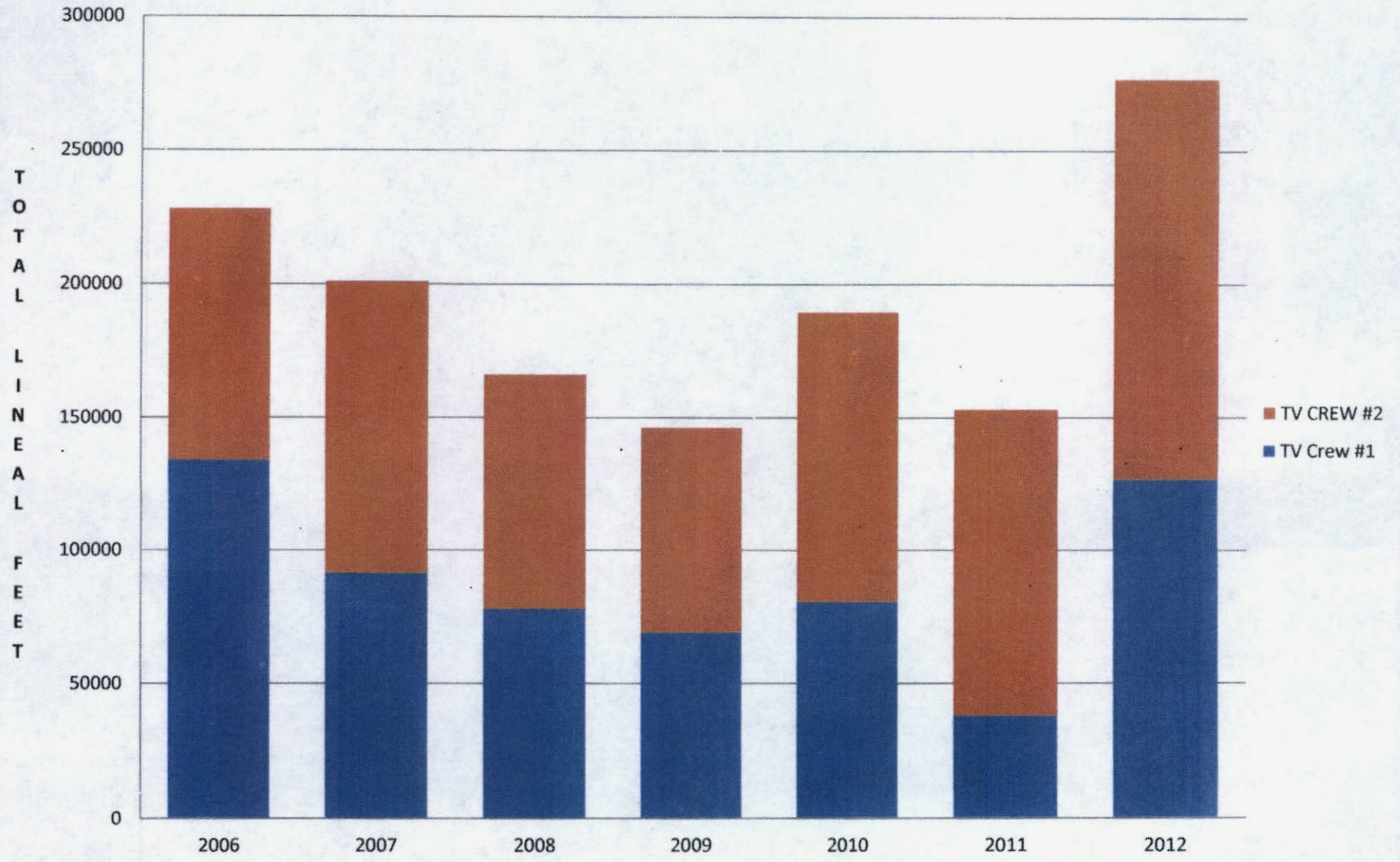
E. Collection System and Wastewater Treatment Plant Remedial Measures Plan

The following is an update of progress on specific collection system and WWTP Remedial Measures:

The remedial measures plan generally consists of measures involving existing equipment, personnel and practices which can be modified to reduce the occurrence of SSOs.

- i. Increase production of TV and cleaning crews
 - a. The following graph (TV Crew Production 2006 – 2012) and map (Lines Televised November 2011 thru December 2012) document the efforts to increase production of the TV crews in targeted areas.

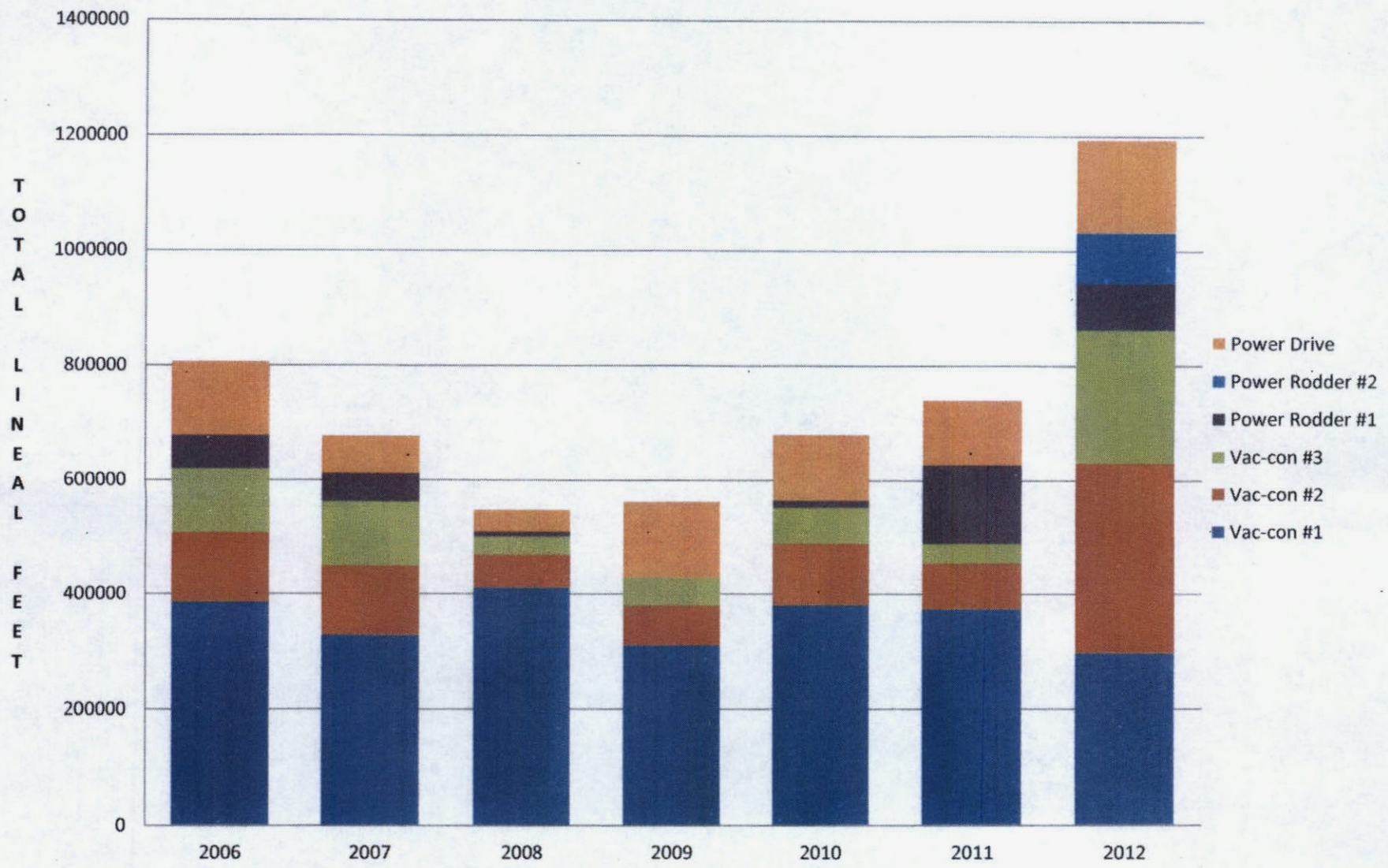
North Little Rock Waste Water Utility TV Crews Production 2006 - 2012

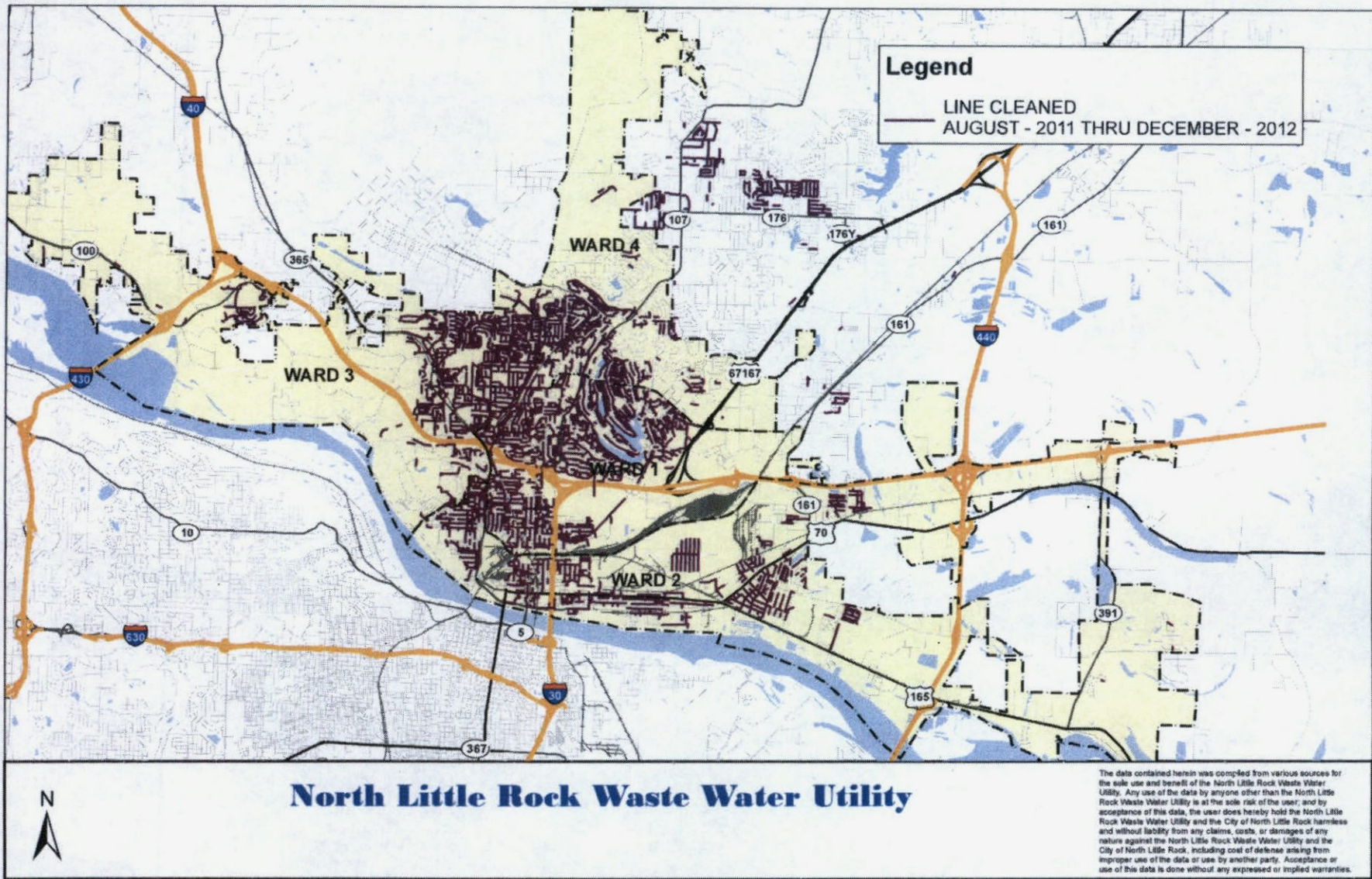




- b. The following graph (All Cleaning Crews Production 2006 – 2012) and map (Lines Cleaned August 2011 thru December 2012) document the efforts to increase production of the cleaning crews in targeted areas.

North Little Rock Waste Water Utility All Cleaning Crews Production 2006 - 2012





ii. Increase production by adding additional crews or personnel

- a. A Power Rodder crew and equipment was added in 2012 to increase cleaning totals. The power rodder provides mechanical cleaning for hilly areas which are problematic for the Vacon cleaning equipment.

Power Rodder Crew #2 cleaned 88,618 LF of pipeline in 2012. In addition, this crew filled in to help temporarily form a second Power Drive Crew to reach lines inaccessible to mechanical cleaning equipment.

- b. In 2013, a two (2) man walking crew is being added to provide GPS location of manholes ahead of all cleaning crews. Manholes not identified on existing maps can slow the progress of a cleaning crew. The purpose of the walking crew will be to locate manholes ahead of the cleaning crews, thus allowing the cleaning crews to continue work in other areas without stopping to search for lost manholes.

- c. Flagman

The North Little Rock Traffic Service Department requires preparation of a barricade plan for each crew working on a "busy" roadway. This includes the cleaning and TV crews which were previously excluded. The Utility surveyor standardized the preparation of barricade plans to streamline this process.

iii. Provide emergency pumping connections at pump stations.

Following the ice storms in December 2000, the Utility implemented a program to provide emergency pumping connections at all the pump stations. The connections allow a trailer mounted, suction lift pump to draw water from the wetwell and pump directly into the force main, thus by-passing the permanent pumping equipment during emergency situations such as power and equipment failures.

Since December 2000, emergency pumping connections have been installed on thirty-three (33) pump stations, and emergency pumping connections are required on all new pump stations where feasible.

The following "Pump Station Emergency Response Connections" sheets identify pump stations with emergency pumping connections.

NORTH LITTLE ROCK WASTE WATER UTILITY PUMP STATION EMERGENCY RESPONSE CONNECTIONS 2012

PUMP STATION #	PUMP STATION NAME	LOCATION	PUMP CONNECTION	TRANSFER SWITCH	GENERATOR	VOLTS
402	BRIDGEWAY HOSPITAL #2	BEHIND BRIDGEWAY HOSPITAL	Y	N	N	230 1Ø
403	CLAYTON CHAPEL	8910 LANDERS ROAD	Y	N	N	240 3Ø
405	DELTA LAWN	INTERSECTION OF CAMPBELL & LYNCH	Y	N	N	240 3Ø
406	DIXIE	920 F STREET (10TH & G)	Y	N	N	240 3Ø
407	HWY 107	10617 HWY 107	Y	Y	N	240 3Ø
408	LANSBROOK	2312 HOLT ROAD (EAST BETHANY & HOLT)	Y	Y	N	240 3Ø
409	MARYLAND EAST	1500 EAST MARYLAND	Y	Y	N	240 3Ø
410	MARYLAND PLACE	S. SIDE OF E. MARYLAND; 400 YRDS FROM MARYLAND E. PS.	Y	N	N	240 1Ø
413	COCK-OF-THE-WALK (#2)	SOUTHEAST SIDE OF COCK-OF-THE-WALK RESTAURANT	Y	N	N	480 3Ø
414	MAYBELLINE	AT THE END OF MAYBELLINE ROAD	Y	Y	N	480 3Ø
415	MCALMONT	AT THE EAST END OF WEST 44TH	Y	N	N	240 3Ø
416	MID-STATE	HWY 161 & PROTHO, NORTH SIDE OF MID-STATE TRUCK STOP	Y	N	N	240 3Ø
417	OAKBROOK	1412 MANOR DRIVE	Y	N	N	480 3Ø
418	PINE TREE	4 PINE TREE POINT	N	N	N	240 1Ø
419	SHILLCUT	14 BAYOAKS DRIVE	N	N	N	480 3Ø
420	SHORTER COLLEGE	1001 NORTH VINE	Y	N	N	240 3Ø
421	BURNS PARK EAST	SOUTH OF THE TENNIS COURTS IN BURNS PARK	N	N	N	240 3Ø
422	BURNS PARK WEST	WEST OF RIDES IN BURNS PARK	N	N	N	240 1Ø
423	LAKEWOOD PLACE	3301 LAKEVIEW ROAD	N	N	N	230 1Ø
424	I 440 INDUSTRIAL PARK	INDUSTRIAL DRIVE	Y	N	N	208 3Ø
425	AUSTIN LAKE	802 INDIAN BAY -- SHERWOOD	Y	N	N	480 3Ø
426	FRONTIER DR. - MORGAN	FRONTIER DRIVE	Y	N	N	480 3Ø
427	MARCHE-MORGAN	ROBIN VALLEY RD.-- OFF MARCHE	Y	N	N	480 3Ø
429	BAUCUM INDUSTRIAL	1201 BAUCUM INDUSTRIAL DRIVE- NEXT TO GLOVER TRANS.	Y	N	N	208 3Ø
430	WILCOX	1124 HWY 391 SOUTH--SCOTT	N	AUTO	Y	480 3Ø
431	QUAPAW	13743 FAULKNER LAKE RD--BY GOLF COURSE	Y	N	N	240 3Ø

- 2012 Installed Emergency Response Connection
- 2013 Proposed Emergency Response Connections
- 2014 Proposed Emergency Response Connections

NORTH LITTLE ROCK WASTE WATER UTILITY PUMP STATION EMERGENCY RESPONSE CONNECTIONS 2012

PUMP STATION #	PUMP STATION NAME	LOCATION	PUMP CONNECTION	TRANSFER SWITCH	GENERATOR	VOLTS
432	HWY 365-SHERMAN RD	2ND CURVE TO LEFT OFF SHERMAN RD-GRAVEL EASEMENT	Y	Y	N	480 3Ø
433	GAP CREEK	RIGHT OFF BROCKINGTON IN GAP CREEK SUBDIVISION- 1 BLOCK ON RIGHT	Y	N	N	240 3Ø
434	HARRIS INDUSTRIAL PARK	ON DIAMOND DR BETWEEN DIAMOND INTERNATIONAL & GREAT DANE	Y	N	N	480 3Ø
435	BURNS PARK RV PARK	BEHIND RV DUMP STATION	N	N	N	240 1Ø
436	BURNS PARK LANDSCAPING	SOUTH OF LANDSCAPE MAINTENANCE BLDG.	N	N	N	240 1Ø
437	BURNS PARK SOUTH	ON GOLF COURSE BY HOLE #5 TEE BOX, PAR 3, 132 YARDS	N	N	N	240 1Ø
438	HILL LAKE	ON BARTON RD BESIDE GALLOWAY INN	N	Y	N	480 3Ø
439	BURNS PARK SOCCER FIELDS	1 BLOCK PAST HEILMAN ON RIGHT	N	N	N	230 1Ø
440	COLLINS INDUSTRIAL PARK	END OF COLLINS RD.	Y	N	N	480 3Ø
441	COUNTS MASSIE	8701 COUNTS MASSIE RD MAUMELLE, AR 72113	Y	Y	N	480 3Ø
442	CHAPEL RIDGE	5900 MCCAIN PLACE NLR, AR 72116	Y	N	N	240 3Ø
443	RIXIE PUMP -HWY 161	BESIDE 6302 HWY 161	Y	N	N	480 3Ø
444	RIXIE PUMP-LUCKY DR.	LUCKY DR OFF HWY 161	Y	N	N	480 3Ø
445	RIXIE PUMP- TRAMMEL RD	BEHIND 834 TRAMMEL RD	Y	Y	N	480 3Ø
446	RIXIE PUMP-RIXIE RD- RR TRACK	AT RR CROSSING ON RIXIE RD	Y	N	N	480 3Ø
447	CYPRESS CROSSING	MYENA LANE OFF OF HWY 165	Y	N	N	480 3Ø
448	CRYSTAL BAY	2 BLOCKS WEST ON CRYSTAL HILL RD FROM COUNTS MASSIE RD	Y	N	N	480 3Ø
449	TRAMMEL ESTATES	IN TRAMMEL ESTATES FIRST LEFT 1 BLOCK DOWN	Y	N	N	240 1Ø
	FAULKNER LAKE INFLUENT	7400 BAUCUM PIKE	N	AUTO	Y	480 3Ø
	WHITE OAK INFLUENT	6000 HEILMAN	N	Y	N	480 3Ø
	FIVE MILE INFLUENT	5601 E 45TH STREET	N	N	N	480 3Ø
	FIVE MILE EFFLUENT	5601 E 45TH STREET	N	N	N	480 3Ø

2012 Installed Emergency Response Connection
 2013 Proposed Emergency Response Connections
 2014 Proposed Emergency Response Connections

- iv. Provide emergency generator connection and transfer switches at pump stations.

In 2008, the Utility purchased a 480V, 3phase, 100 KW trailer mounted generator. This generator is used to provide temporary power to certain pump stations.

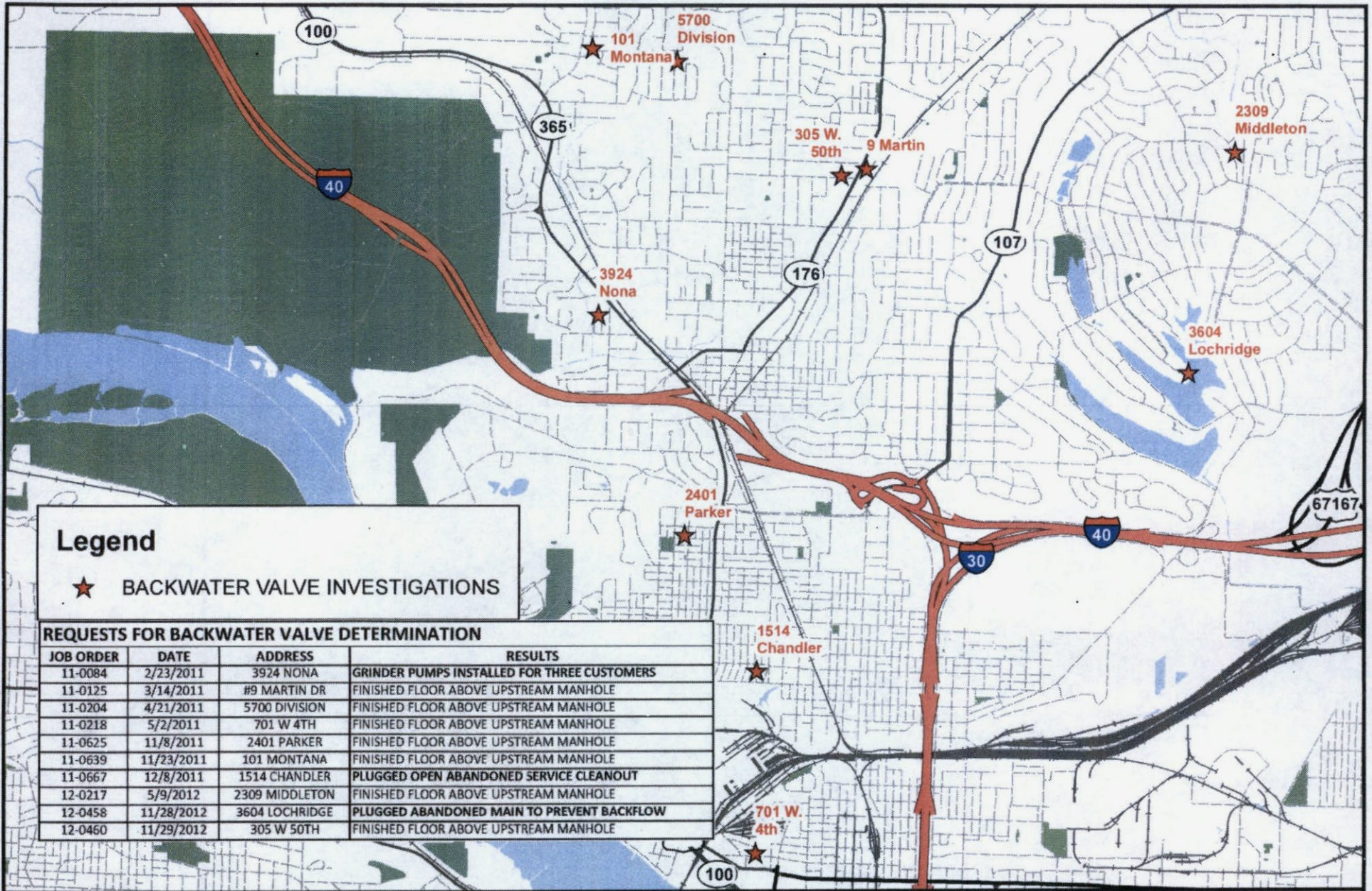
To date, transfer switches have been installed on nine (9) pump stations. New pump stations are required to include emergency generator connections and transfer switches.

The above (E. iii) "Pump Station Emergency Response Connections" table identifies pump stations with transfer switches.

- v. Identify areas subject to building/private property backups.

The Utility utilizes trouble calls to initiate an investigation to determine areas subject to building/private property backups. A trouble call attributed to "high water" and resulting in slow draining fixtures or backups in buildings or property initiates a work order to the Civil Engineer. The Civil Engineer conducts an investigation to determine the cause of the backup and documents the need for corrective action. The Civil Engineer documents the need for a backwater valve and sends a letter to the property owner. A copy of the letter is given to the GIS Administrator for entry into the GIS database.

Following is a map identifying the addresses investigated in 2012 for the need for backwater valves and the resulting action taken.



Legend
 ★ BACKWATER VALVE INVESTIGATIONS

REQUESTS FOR BACKWATER VALVE DETERMINATION			
JOB ORDER	DATE	ADDRESS	RESULTS
11-0084	2/23/2011	3924 NONA	GRINDER PUMPS INSTALLED FOR THREE CUSTOMERS
11-0125	3/14/2011	#9 MARTIN DR	FINISHED FLOOR ABOVE UPSTREAM MANHOLE
11-0204	4/21/2011	5700 DIVISION	FINISHED FLOOR ABOVE UPSTREAM MANHOLE
11-0218	5/2/2011	701 W 4TH	FINISHED FLOOR ABOVE UPSTREAM MANHOLE
11-0625	11/8/2011	2401 PARKER	FINISHED FLOOR ABOVE UPSTREAM MANHOLE
11-0639	11/23/2011	101 MONTANA	FINISHED FLOOR ABOVE UPSTREAM MANHOLE
11-0667	12/8/2011	1514 CHANDLER	PLUGGED OPEN ABANDONED SERVICE CLEANOUT
12-0217	5/9/2012	2309 MIDDLETON	FINISHED FLOOR ABOVE UPSTREAM MANHOLE
12-0458	11/28/2012	3604 LOCHRIDGE	PLUGGED ABANDONED MAIN TO PREVENT BACKFLOW
12-0460	11/29/2012	305 W 50TH	FINISHED FLOOR ABOVE UPSTREAM MANHOLE



North Little Rock Waste Water Utility

The data contained herein was compiled from various sources for the sole use and benefit of the North Little Rock Waste Water Utility. Any use of the data by anyone other than the North Little Rock Waste Water Utility is at the sole risk of the user; and by acceptance of this data, the user does hereby hold the North Little Rock Waste Water Utility and the City of North Little Rock harmless and without liability from any claims, costs, or damages of any nature against the North Little Rock Waste Water Utility and the City of North Little Rock, including cost of defense arising from improper use of the data or use by another party. Acceptance or use of this data is done without any expressed or implied warranties.

vi. Public education

In 2012, the Utility expanded its Grease Reduction Program to include additional items to 'not' put down the drain and has renamed the program "Maintain YOUR Drain." A summary of the activities conducted by the "Maintain YOUR Drain" staff, in 2012, is attached, as well as, copies of the mailers.

North Little Rock Waste Water Utility's Maintain YOUR Drain Program

(Educating the public on what "NOT" to put down the drain.)

Date	Group Name	Location	Approximate # of Attendees
01/09/12	City Council	300 Main Street, North Little Rock	60
01/27/12	Montessori School	900 Mission Road, North Little Rock	15
02/09/12	Immaculate Conception	7000 JFK, North Little Rock	73
02/15/12	Clinton Magnet School	142 Hollywood Ave, Sherwood	185
02/27/12	XYZ Senior Group	1723 Schaer Street, North Little Rock	30
03/05/12	Neighbors United for Levy	4801 Allen Street, North Little Rock	20
03/12/12	Oakbrooke Elementary	2200 Thornhill Dr., Sherwood	85
03/19/12	HOLT Crimes Watch	1723 Schaer Street, North Little Rock	10
05/03/12	Lakewood Neighborhood Association	4500 Lake Shore Dr., North Little Rock	25
05/08/12	Indian Hills Neighborhood Association	7001 JFK, North Little Rock	50
06/14/12	Scenic Hill Crime Watch	117 Sunset Lane, North Little Rock	10
08/02/12	Ambry Crime Watch	311 E Military Drive, North Little Rock	20
08/09/12	Lion's Club	Golden Corral	25
10/22/12	Pikeview Elementary	441 McCain Blvd, North Little Rock	53
10/30/12	Indian Hills Elementary	6800 Indian Hills Drive, North Little Rock	110
11/01/12	Argenta Boosters	216 West 6th Street North Little Rock	10
12/19/12	North Heights 2nd Grade	4901 N Allen St, North Little Rock	45
Total Attendees to Date			826

Mar-12	55,000 Mailers were sent out with information on how to dispose of grease and pharmaceuticals properly.
Jul-12	55,000 Mailers were sent out with information on how to dispose of grease and pharmaceuticals properly.
Nov-12	55,000 Mailers were sent out with information on how to dispose of grease properly.

In addition, children at the previously mentioned schools were given bracelets with the North Little Rock Waste Water Logo and a message that reads "Protect Our Water" as a reminder of how the dangers of improper grease disposal can harm our environment.

Informative brochures are handed out at all meetings with material on grease and pharmaceutical disposal.

North Little Rock Waste Water Utility's Maintain YOUR Drain Program

(Educating the public on what "NOT" to put down the drain.)

Date	Group Name	Location	Approximate # of Attendees
01/09/12	City Council	300 Main Street, North Little Rock	60
01/27/12	Montessori School	900 Mission Road, North Little Rock	15
02/09/12	Immaculate Conception	7000 JFK, North Little Rock	73
02/15/12	Clinton Magnet School	142 Hollywood Ave, Sherwood	185
02/27/12	XYZ Senior Group	1723 Schaer Street, North Little Rock	30
03/05/12	Neighbors United for Levy	4801 Allen Street, North Little Rock	20
03/12/12	Oakbrooke Elementary	2200 Thornhill Dr., Sherwood	85
03/19/12	HOLT Crimes Watch	1723 Schaer Street, North Little Rock	10
05/03/12	Lakewood Neighborhood Association	4500 Lake Shore Dr., North Little Rock	25
05/08/12	Indian Hills Neighborhood Association	7001 JFK, North Little Rock	50
06/14/12	Scenic Hill Crime Watch	117 Sunset Lane, North Little Rock	10
08/02/12	Ambroy Crime Watch	311 E Military Drive, North Little Rock	20
08/09/12	Lion's Club	Golden Corral	25
10/22/12	Pikeview Elementary	441 McCain Blvd, North Little Rock	53
10/30/12	Indian Hills Elementary	6800 Indian Hills Drive, North Little Rock	110
11/01/12	Argenta Boosters	216 West 6th Street North Little Rock	10
12/19/12	North Heights 2nd Grade	4901 N Allen St, North Little Rock	45
Total Attendees to Date			826

Mar-12 55,000 Mailers were sent out with information on how to dispose of grease and pharmaceuticals properly.

Jul-12 55,000 Mailers were sent out with information on how to dispose of grease and pharmaceuticals properly.

Nov-12 55,000 Mailers were sent out with information on how to dispose of grease properly.

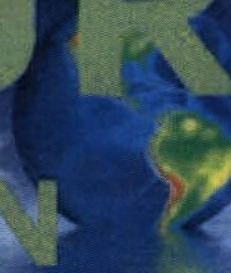
In addition, children at the previously mentioned schools were given bracelets with the North Little Rock Waste Water Logo and a message that reads "Protect Our Water" as a reminder of how the dangers of improper grease disposal can harm our environment.

Informative brochures are handed out at all meetings with material on grease and pharmaceutical disposal.



501-945-7186

MAINTAIN YOUR DRAIN



Do **Not** Put Down the
Drain or Toilet

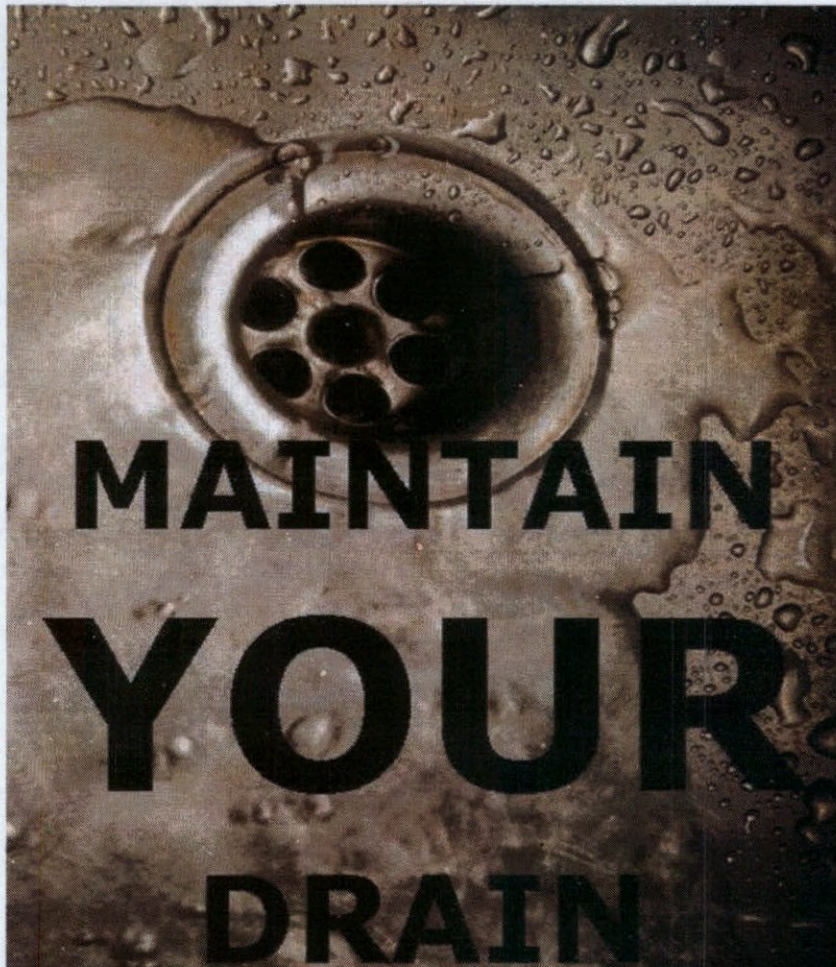
Baby Wipes
Clothing/Rags
Paper Towels
Automotive Oils
Pharmaceuticals
Cosmetics/Fragrances
Sunscreen Products
Chemicals

WWW.NORTHLITTLEROCK.AR.GOV

u:Connie's Files/Marc's/cao2013



501-945-7186



MAINTAIN YOUR DRAIN

Grease

**Never pour grease or cooking oil down
sink drains or
garbage disposals.**

**Place small amounts of grease and oil in
the trash.**

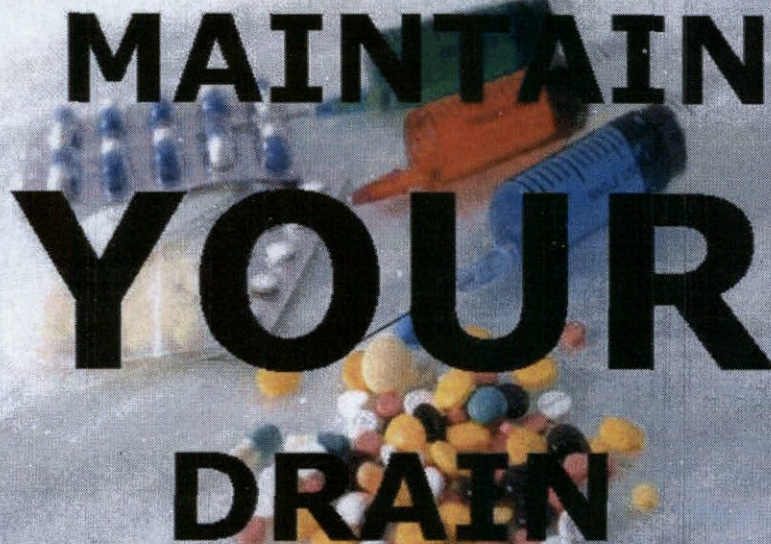
**Large containers of cooking oil can be
recycled at**

**12th & Willow
North Little Rock, AR 72114
(501) 371-8345**

WWW.NORTHLITTLEROCK.AR.GOV



501-945-7186



MAINTAIN YOUR DRAIN

Pharmaceuticals

Do NOT flush them down the toilet.

Mix old pharmaceuticals with used coffee grounds or kitty litter.

Place them in a sealable container and throw them in the trash.

OR

Contact local law enforcement for community take-back programs.

WWW.NORTHLITTLEROCK.AR.GOV

u:Connie's Files/Marc's/cao2013

vii. Treatment plant stormwater runoff protection

- a. The Civil Engineer is developing plans and cost estimates for additional covered equipment storage bays along the southeast corner of the plant site.

This project also includes plans for the addition of a vehicle wash station. In-house staff will provide the topographic survey for this project.

viii. Secure funding for Capital Improvement Projects

- a. A three-step rate increase was adopted by the North Little Rock City Council on March 26, 2012, to fund the capital Improvements program through the Revolving Loan Fund Program.
- b. On November 28, 2012, the Utility closed on a \$21,000,000 loan with the Arkansas Natural Resources Commission.

2. Civil Penalty Payment Summary

<u>Total Owed</u>	\$105,000.00
<u>Payments</u>	
Mar. 10, 2011	(\$4,375.00)
Apr. 25, 2011	(\$4,375.00)
May 25, 2011	(\$4,375.00)
June 25, 2011	(\$4,375.00)
July 25, 2011	(\$4,375.00)
Aug. 25, 2011	(\$4,375.00)
Sept. 25, 2011	(\$4,375.00)
Oct. 25, 2011	(\$4,375.00)
Nov. 25, 2011	(\$4,375.00)
Dec. 25, 2011	(\$4,375.00)
Jan. 25, 2012	(\$4,375.00)
Feb. 25, 2012	(\$4,375.00)
Mar. 25, 2012	(\$4,375.00)
Apr. 25, 2012	(\$4,375.00)
May 25, 2012	(\$4,375.00)
June 25, 2012	(\$4,375.00)
July 25, 2012	(\$4,375.00)
Aug. 25, 2012	(\$4,375.00)
Sept. 25, 2012	(\$4,375.00)
Oct. 25, 2012	(\$4,375.00)
Nov. 25, 2012	(\$4,375.00)

Dec. 25, 2012	(\$4,375.00)
Jan. 25, 2013	(\$4,375.00)
Balance Owed (2/01/2013)	\$4,375.00

3. **Notifications of Deficiencies**

CAO Notices of Deficiencies received from ADEQ: **None** (no. & date)
NLRWU response to Notice of Deficiencies: **N/A** (must be within 15 days)

Summary of NLRWU actions to address deficiencies: **N/A**

4. **Compliance Delays**

Notifications of Compliance Delays submitted to ADEQ: **None** (no. & date)
Length of Compliance Delay: **N/A**

Cause of Compliance Delay: **N/A**

Measures Taken to Minimize Delay: **N/A**

Timetable for Implementing Additional Measures: **N/A**

5. **Certification**

As required by the Order and Agreement, Paragraph 3, North Little Rock Waste Water Utility certifies that we are complying with the ADEQ-approved Wastewater Master Plan.

Respectfully Submitted,



Marc E. Wilkins, PE
Director
North Little Rock Waste Water Utility

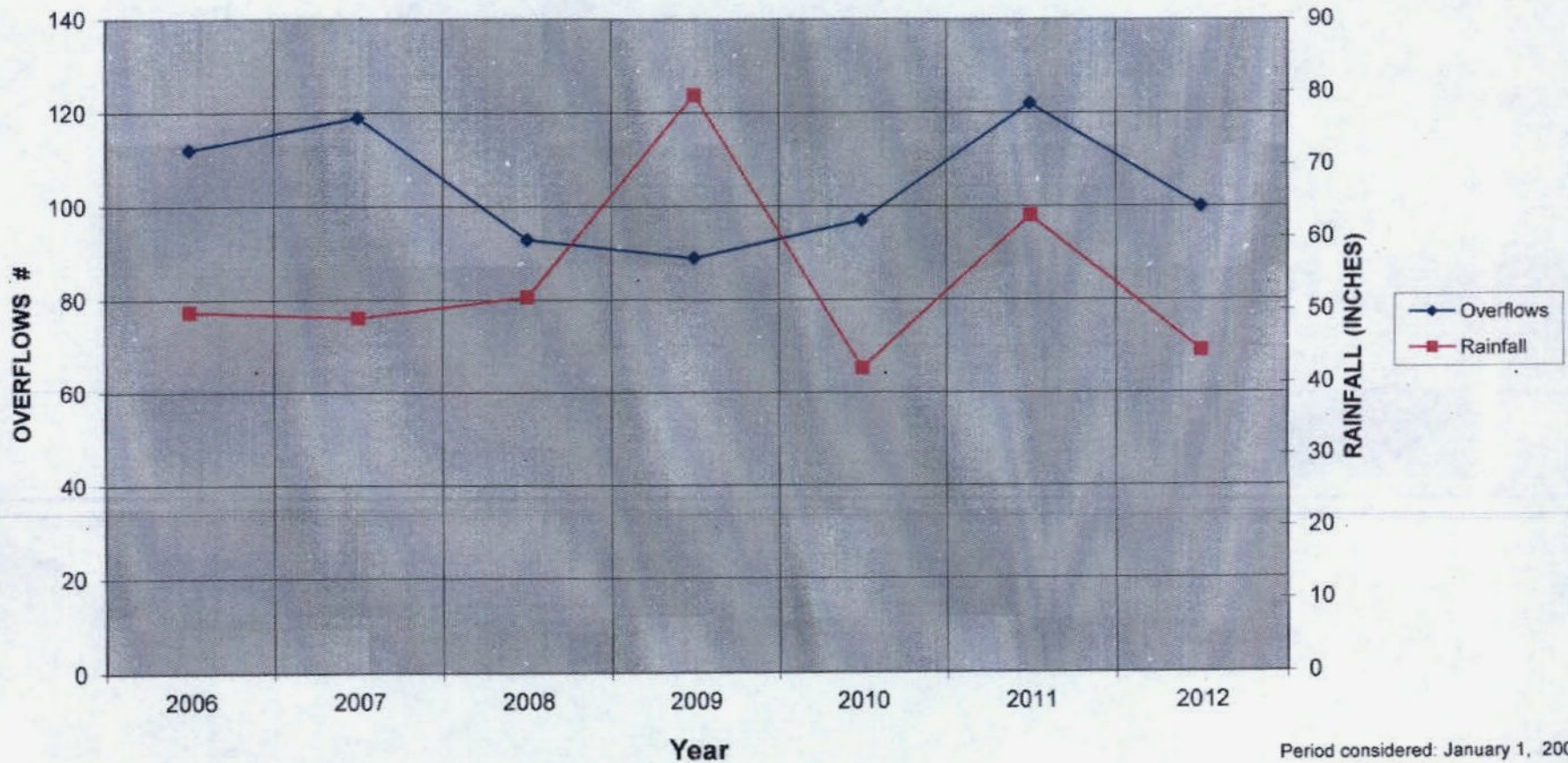
APPENDIX

A. Annual Overflows and Rainfall 2006 – 2012

B. Overflows 2012

North Little Rock Waste Water Utility North Little Rock, AR

Annual Overflows and Rainfall



Period considered: January 1, 2006
thru Dec.31, 2012

Note: 2009 Rainfall Year to Date
(12/7/09) ranks as the highest on record.
(per National Weather Service, NLR Office)

O:\Annual overflows and rainfall #1File #1
Prepared By: Elaine Anderson

